

## **Covering in GRP** Fully customized top closure structures

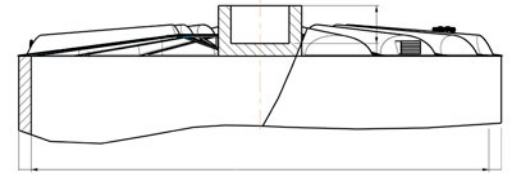
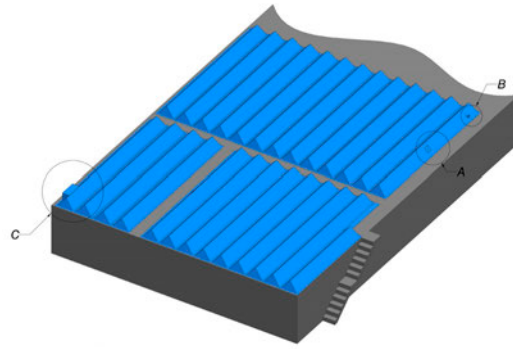
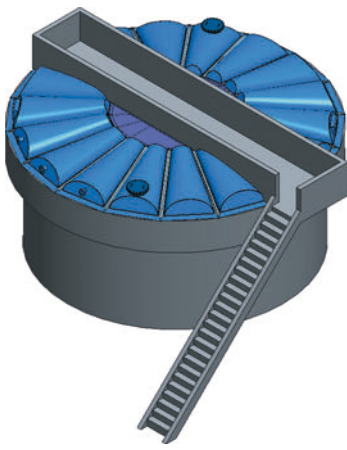
**Dimasa Grupo** designs, manufactures and installs self-supporting **cylindrical and rectangular modular coverings** for tanks, decanters, digesters and sludge thickeners, whether or not fitted with a gangway or central pillar. Coverings of this type are used in areas of **water purification, desalination plants** and areas where the corrosive environment is predominant.



### **Advantages of our system in GRP**

- GRP equipment has high **chemical and mechanical resistance and to the external corrosion agents**. The **service life** of our GRP equipment is **approximately 50 years**.
- We manufacture according to the following standards: **UNE EN 13121-3: 2010** and **ASME RTP1-2011**.
- Our manufacturing process is based on the **technique of molding projection**, which consists of projecting the polyester resin together with the fiberglass on a metal mold. The difference with other techniques is that this is the one that offers **more possibilities in terms of design**.
- We also carry out in GPRS the **walkways, stairs, grilles, railings and any accessory of profiling** associated with the installation of the covering.

**With each project we deliver the design memory of the equipment, which includes the calculations of the covering and the metal structure**



## PROCEDURE AND MANUFACTURING MATERIALS

- **WATERPROOF BARRIER:** also called **anticorrosive** barrier, because it is directly exposed to the medium, and therefore, susceptible to suffer a greater chemical attack. For this reason, this layer has a **higher resin content** (around 70% by weight).
- **STRUCTURAL LAMINATION:** Depending on the element to be manufactured, different procedures will be used. In the case of the **bottoms**, the **hand lay up procedure** will be used, and in the case of the **ferrules**, the **continuous winding procedure** will be used, which consists of the application of fiberglass helices in **format of roving** by mechanical means.
- **FINISHING COAT:** Finally a white **finish layer** is applied.

## TYPES OF COVERINGS. WE ADAPT TO YOUR NEEDS



Flat circular covering



Undulating semicircular covering



Square covering



Rectangular covering



Wavy circular covering

**We study your needs to select the most appropriate production method depending on the distances to be covered, morphology and loads**