



## Double wall tanks GRP

Tanks manufacturer

**Dimasa Grupo** manufactures tanks **Reinforced Polyester Fiber Glass** vertical flat with lower surface and upper toriesféric base, double wall **APQ006** complying with the regulations to prevent the construction of the drip pan.



### Advantages

- **High** chemical and mechanical **resistance**.
- Lightweights and **easily transportable**.
- Saving space on the ground.
- **High durability and no maintenance**.
- Easy cleaning and repair to a break mechanics.
- Thermally and electrically isolated.
- **High resistance to external corrosion agents**.
- **Saving** in the construction of containment .

### All our tanks have a dual camera or three-dimensional tissue to prevent leakage or loss of product

- Depending on the product to be contained, its concentration and temperature always **we use the most appropriate construction materials**.
- Deposits **can customized** with the color chosen by the customer.



Double-walled tanks



Double-walled tanks thermally insulated heating cable



## Technical specifications

- Capacity between 1,000 and 250,000 liters in one piece.
- Diameters of 500, 800, 900, 1000, 1200, 1500, 1800, 2000, 2500, 3000, 3500 and 4000 mm.
- Deposits double wall tank can be double or three-dimensional tissue.

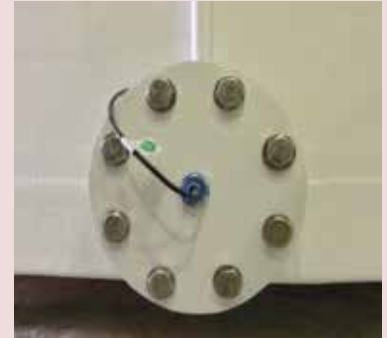
### All our double-walled tanks include:



Control Panel  
integrated in the reservoir

Light and sound signals to  
warn if the tank is at maximum  
level

Leak Detector



- For manufacturing we use different types of resin: **Orthophthalic, Isophthalic, Bisphenol and Vinylester.**
- Manufacturing standards of deposits can be: UNE EN 13121-3: 2010.  
and ASME RTP-1.
- The pipes are GRP DIN 2576.

### Accessories Available

- Mouth inferior man / superior Dn-500 PN 0.2, 2.5, June 10, screwed.
- Mouth man elliptical bridge, steering wheel cover in Steel or GRP.
- Din 2576 GRP sockets.
- Anchors fixation to the ground.
- Ears elevation.
- System visually transparent PVC.
- Visual system level through pulleys.
- Level detectors minimum and maximum leakage.
- Electrical panel with light and sound signal leakage or maximum.
- Venting.
- Support stirrer.
- Breakwater.
- Heat-tracing system to maintain the temperature.
- Coils in Steel.
- Supports for piping.
- Thermal polyurethane plates coated by GRP.

